

Warehouse Epoxy Flooring in Brisbane

What is Warehouse Epoxy Flooring?

Looking for a **top-of-the-line** warehouse epoxy? If so, I think you are on the right page.

Help! I Need Warehouse Epoxy Flooring and I Need the Best One Ever.

A **warehouse** is the heartbeat of a business. Likewise, it is one of the most solid flooring environments.

Those pallet jacks, forklifts, and stillages operating 24 hours across Brisbane, thousands of people are working day and night in these places.

With numerous flooring solutions available, why should you choose Epoxy Flooring Brisbane for your epoxy coating needs?

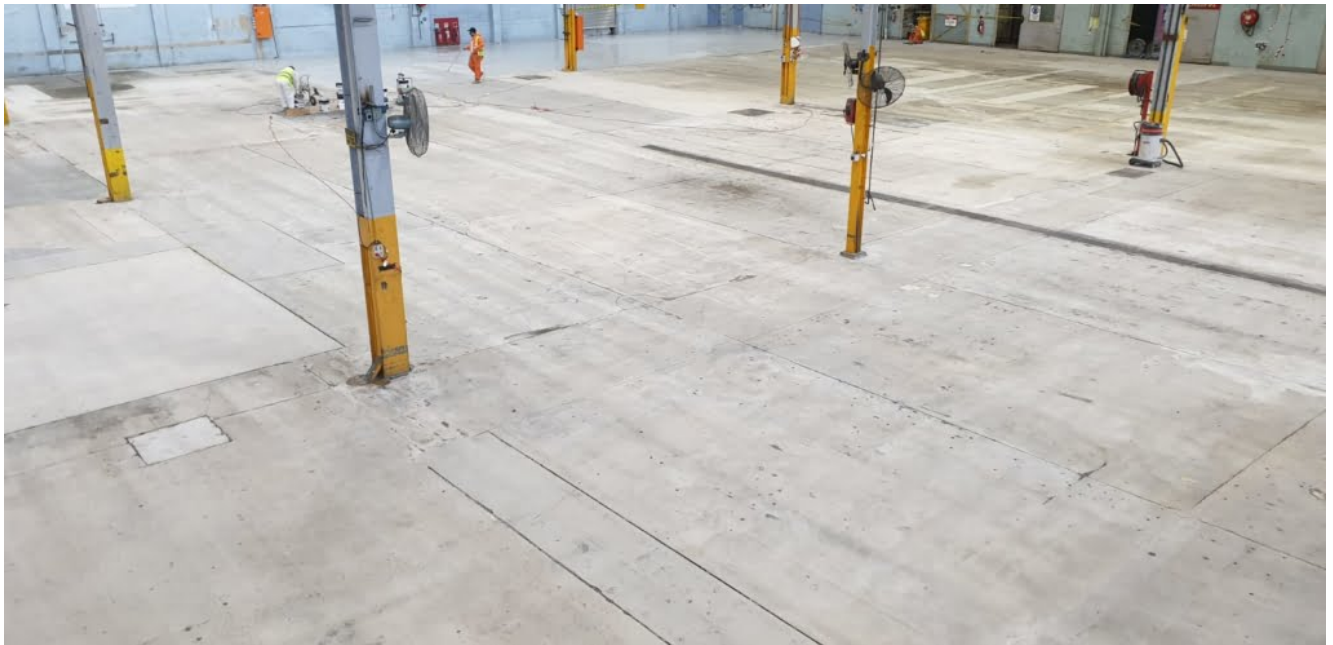
Warehouse Floor Coating Gallery

Check out these photos from our completed projects.

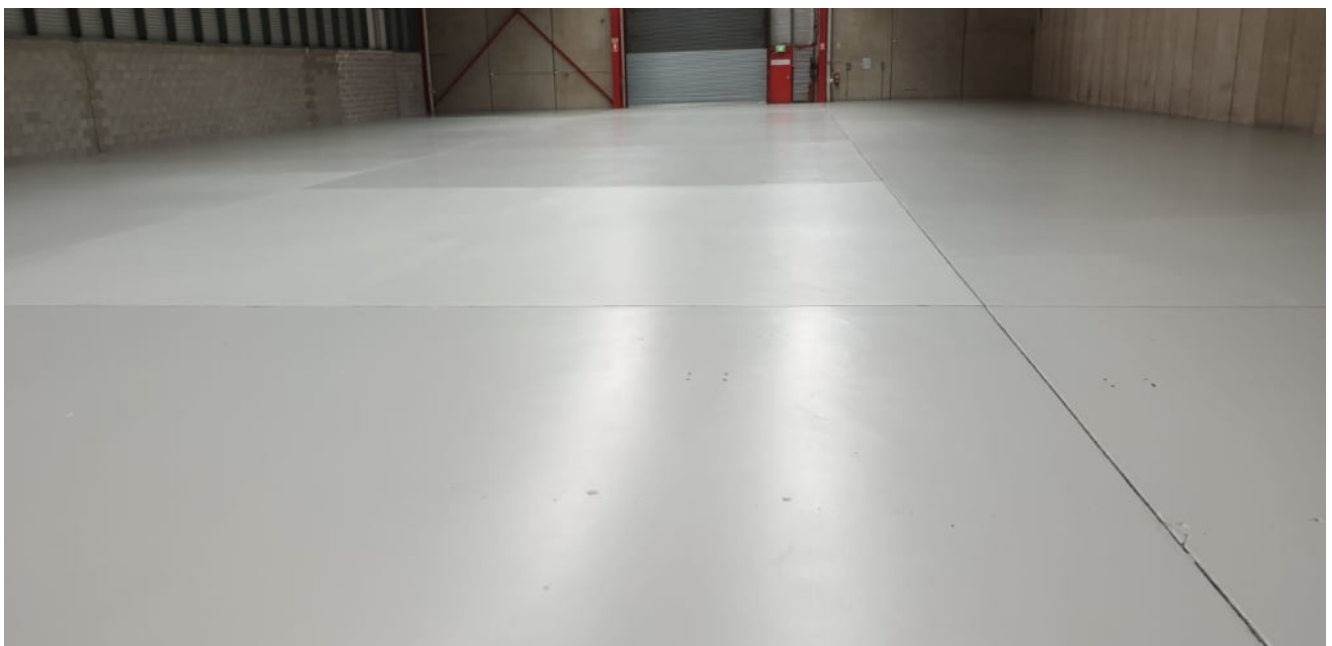
If you are looking for an industrial flooring solution that combines durability, performance, and visual appeal, **warehouse epoxy flooring** should be at the top of your list. This flooring type, which is becoming increasingly popular for its numerous benefits, can significantly enhance the functionality of your warehouse space.

Warehouse epoxy flooring is a specially formulated, high-performance surface covering for warehouses and other large industrial spaces. It consists of a two-part system that includes a resin and a hardener. This bonding process provides a robust and durable surface that can withstand the harsh conditions typically associated with warehouse environments. Typically, concrete floors are covered with it to produce a seamless, smooth finish that can endure high traffic, mechanical strain, and chemical exposure. Epoxy flooring not only strengthens the concrete substrate beneath it but also creates a surface that is aesthetically pleasing and simple to maintain.

Durability, efficiency, and safety are critical considerations in the busy world of manufacturing environments. Epoxy flooring for warehouses has become a cutting-edge answer to the particular needs of such areas. Epoxy flooring has quickly become a top option for warehouses, distribution centers, manufacturing plants, and numerous industrial locations because of its seamless, sturdy, and chemical-resistant qualities. The fundamental characteristics, advantages, and applications of warehouse epoxy flooring are highlighted in this article.









Industrial Environments Epoxy Flooring

Warehouse epoxy flooring is used in a variety of industrial workspaces, including:

1. Warehouses and Distribution Centers

- Epoxy flooring is the best choice for warehouses and distribution centers because of its sturdiness and

resistance to heavy traffic, which make these spaces perfect for forklifts, pallet jacks, and continuous product transportation.

2. Manufacturing Plants

- Epoxy flooring keeps production facilities clean and safe while withstanding the impact of heavy machinery and foot traffic.

3. Food Processing Facilities

- Epoxy flooring's smooth and non-porous characteristics satisfy the stringent hygiene standards in **facilities used for food preparation**, reducing the formation of bacteria and ensuring simple sanitation.

4. Automotive Garages

- Due to its chemical resistance, epoxy flooring is appropriate for use in auto garages where it can tolerate spills of oil, grease, and chemicals without staining or damaging the floors.

For the production of high-performance industrial floors, warehouse epoxy flooring is an excellent option that combines strength, resilience, and function. It is the best option for industrial spaces looking for a long-lasting efficient flooring system considering its durability, chemical resistance, slip resistance, and cost-effective maintenance. For several kinds of industrial applications, warehouse epoxy flooring ensures a safe, helpful, and stylish environment

thanks to its durability against large loads, mechanical stresses, and harsh chemicals.

Epoxy flooring has established itself as a wise investment for industrial areas aiming to increase their performance and longevity, whether it's due to the seamless installation, durability against chemicals, additional safety measures, or ease of maintenance. Warehouse epoxy flooring has proven its effectiveness and strength as a flooring option for industrial spaces even as industry needs continue to change.

Enhancing Efficiency and Sustainability

Promoting sustainability with epoxy flooring is more than a trend; it is a sensible decision that supports our shared commitment to resource preservation and environmental protection. Due to its eco-friendliness, epoxy flooring is a popular option for companies, and people are seeking to have a good ecological impact while still making use of its high-performance flooring alternative.

Sustainability of using warehouse Epoxy Floorings:

1. Eco-Friendly Materials

- Many epoxy flooring materials contain low or no volatile organic compounds (VOCs) in their composition, which reduces the release of dangerous chemicals into the environment. Businesses may promote sustainable practices and better indoor air quality by choosing environmentally friendly epoxy products.

2. Longevity and Reduced Waste:

- Compared to other flooring solutions, epoxy flooring requires less replacement due to its outstanding longevity. In the long run, this is a better choice for the environment since it reduces the consumption of resources and waste production while also reducing the need for regular replacements.

3. Energy Efficiency

- Since epoxy flooring has a glossy sheen, it reflects light, increasing the room's natural brightness and lowering the need for extra lighting. Because of its energy-efficient features, which assist in lowering electricity use, it is an environmentally friendly choice for companies looking to lower the environmental impact of their operations.

4. Low Maintenance and Water Usage

- Due to its smooth surface, epoxy flooring requires little to no maintenance, which saves on water and harsh cleaning agents. This ecologic feature reduces the environmental effect of floor maintenance and is consistent with environmentally friendly practices.
-

How Epoxy Floors Meet Warehouse Demands

Warehouses are mostly involved with busy environments where a lot of inventory, large machinery, and constant foot traffic are dealt with. Choosing the right kind of flooring plays a role in such highly-populated areas for ensuring effectiveness, employee security, and service that is affordable. Epoxy flooring is currently the standard choice for satisfying the specific needs of warehouses.

1. Unmatched Durability

- Durability is the first and most important criterion for a warehouse floor. Epoxy floors are known for their extraordinary durability, making it possible for them to endure the constant friction brought on by heavy machinery, forklifts, and cargo jacks. Epoxy coatings produce a flawless, sturdy surface that makes sure the floor is capable of withstanding tremendous pressure and constant movement without revealing signs of damage or wear.

2. Chemical Resistance and Spill Management

- The chance of accidental spills and marks on the floor has increased in warehouses since they consistently handle a wide range of chemicals, oils, and corrosive materials. Chemical resistance in epoxy flooring serves as a necessary protection against these kinds of events. Epoxy floors have an impenetrable covering that serves as a barrier, keeping chemicals from breaking down the

floor's concrete base and damaging it.

Epoxy floors are simple to clean after spills, preventing accidents from leaving a permanent mark on the surface. Spills may be quickly and effectively controlled reducing the risk of accidents and providing the least amount of disruption to warehouse operations all while keeping a safe and comfortable workplace.

3. Enhanced Safety Measures

- In warehouses, where workers and guests are often exposed to possible hazards, safety is of the utmost concern. Epoxy flooring offers various safety advantages that are specifically designed to the customary demands of these workplaces. Slip-resistant additives can be added to many epoxy coatings to increase traction and lower the danger of slips and falls, even in wet or spill-prone regions.

Additionally, safety markers, designated paths, and zoned areas can be made with epoxy floors to help guide visitors and maintain a successful company throughout the warehouse. These safety precautions not only help avoid accidents but also speed up processes, increasing overall productivity in the warehouse. We also offer a line marking service in Brisbane that can enhance our safety precautions.

With epoxy floors in place, warehouses can operate with confidence knowing that their flooring is capable of withstanding the everyday usage of heavy machinery, pedestrian usage, and chemical exposure thanks to the epoxy floors that are installed in their facilities. May Epoxy floors continuously rise to the challenge of increasing security, efficiency, or affordability, making them the best option for

satisfying the special requirements of warehouses and ensuring their ongoing success.

To ensure the quality of your floors we are using high-quality **brands**.

You can find detailed information about these brands by reading “Top Notch Quality Floors Using Only THE Best Brands”. We subsequently did it in detail for you and have provided their official websites in this blog.

1. Dulux Durebild STE



2.

3. Sika Resin



4.

5. Haymes Epoxy



6.

7. Parchem Single Pack Polyurethane



8.

1. Dulux Luxafloor LGE



2.

3. Sika Epoxy Solution



4.

5. Haymes Waterbase Epoxy



6.

1. Dulux Luxafloor EC02



2.

3. Sika Moisture Barrier



4.

5. Parchem Epoxy



6.

1. Dulux Luxafloor PTX



2.

3. Hychem SF32



4.

5. Parchem Avista Water Base Epoxy



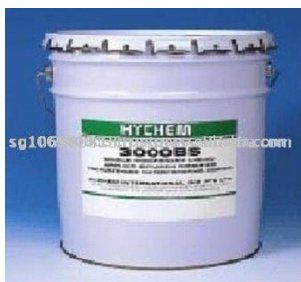
6.

1. Dulux Roadmaster A1



2.

3. Hychem Polyurethane



4.

5. Parchem Polyurethane 2 packs



6.

Curious About the Difference Between Epoxy Flooring and Concrete Polishing?

We have a dedicated blog just for that so check this detailed blog about the difference of epoxy flooring and concrete polishing. So you can make the right choice for your residential, garage or kitchen flooring needs.

Warranty

Firstly, we give a **one-year workmanship warranty** against peeling and delamination. Secondly, the warranty does not cover moisture-related and negligent issues. A manufacturer certificate, on the other hand, could be offered if it has been mentioned prior to the start. As the manufacturing representative has to assess the project to be able to issue the necessary certification. We do not offer a warranty for substrate failure such as cracking of floors, shifting, or crumbling of the concrete.

Occupational Health and Safety

As part of our commitment to achieving the principles of health and safety in the workplace.

The company, Epoxy Flooring Brisbane, recognizes its moral and legal responsibility to provide a safe and healthy work environment for its employees, contractors, customers, and visitors.

This commitment also extends to ensuring that our operations **do not place** the local community or environment at risk of injury, illness, or damage. Furthermore, we also declare a no-smoking zone due to the material used.

Warehouse Epoxy Flooring is indeed a necessity for your industrial facility. We, at Epoxy Flooring Brisbane, would love to help you create a warehouse environment where your team can work efficiently. Call us today at 1300321433 or fill out our online form! You can also send your inquiries via email at info@epoxybrisbane.com.au.

We will ensure that your project is completed on time and be of the highest standard. Enquire now with Darius Soltani.

FAQs About Warehouse Epoxy Flooring

What are the types of warehouse epoxy floors?

Epoxy Flooring Brisbane offers a wide range of concrete floor coating solutions designed for warehouse environments. We provide custom epoxy coating on the concrete floor, with options such as non-slip finishes for safety, scratch-resistant polyurethane for durability, UV-protected coatings for sun-exposed areas, and different finish styles including semi-gloss, matte, and water-based epoxy. For added strength and visibility, we also offer flake finishes, high-visibility epoxy, line marking solutions, colour-coded designs, and even glow-in-the-dark coatings to improve warehouse safety and functionality.

Not sure which epoxy solution suits your warehouse best? Contact our team or call us on 1300 321 433 for expert advice.

What is the lifespan of warehouse epoxy coated floors?

There are several factors that influence the lifespan of warehouse epoxy floors. The strength of the concrete floors is as important as the epoxy coating applied to the surface. Other factors that influence the lifecycle of epoxy are its thickness, UV light, pedestrian and vehicular traffic, and the brand of epoxy used on the surface. More importantly, how the epoxy floor gets treated and how has it has been maintained.

How long does warehouse epoxy flooring installation take?

Most warehouse epoxy projects are completed within 2–5 days, depending on the size of the area and surface preparation needed. We'll give you a clear timeline before we start.

Do I need to shut down my warehouse during installation?

In most cases, yes. To ensure correct curing and long-lasting results, the floor must remain clear of traffic. However, our warehouse epoxy specialists work efficiently to minimise downtime and get your operations back up and running quickly.

Is epoxy flooring safe for food or pharmaceutical warehouses?

Yes. Our epoxy systems meet strict hygiene standards. The seamless, non-porous surface prevents bacteria build-up and allows easy cleaning.

What maintenance is required?

Epoxy floors are low-maintenance. Regular sweeping and occasional mopping with a non-abrasive cleaner will keep your floors looking new.